



**PITTS BROTHERS**  
*& Associates, LLC*

**LAND  
 FOR SALE**

**VILLAGE OF MT PLEASANT, RACINE COUNTY**

**Asking Price:**  
**\$1,950,000**  
**Development Land**  
**39.52 +/- Acres**

**LOCATED**  
**SW Corner**  
**STH 31 (Green Bay Road)**  
**&**  
**Braun Road**

**Village of Mount Pleasant**  
**Racine County, Wisconsin**

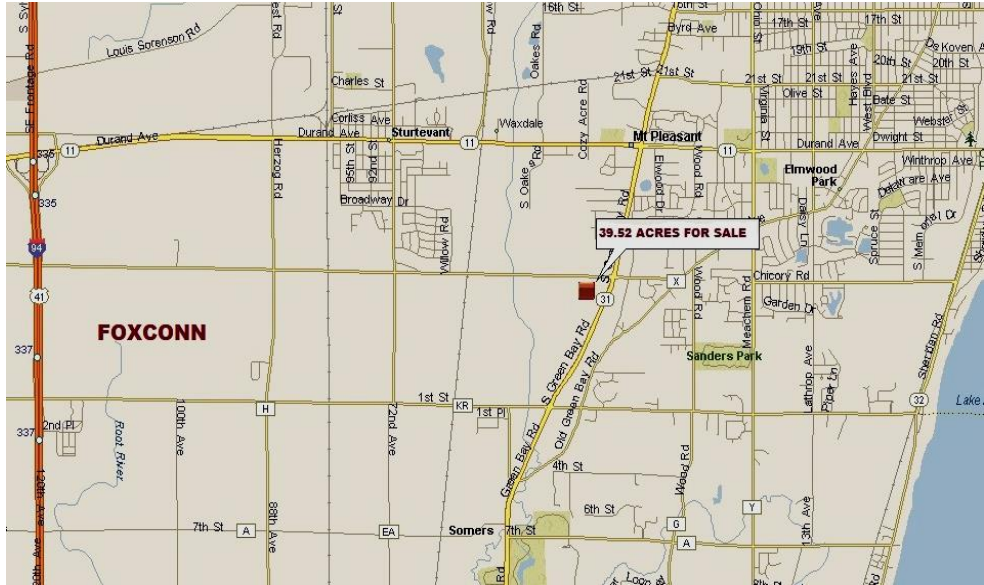
**Parcel Number**  
**151032235006001**

**Identified as Mixed Use**  
**Residential Commercial in**  
**Mount Pleasant Long-Range Plan**

**For Information**  
**Please Contact**

----->

Information shown on this sheet was furnished by sources deemed reliable and is believed to be accurate but no warranty or representation is made to the accuracy thereof and is subject to correction.



**PITTS BROTHERS & ASSOCIATES LLC**

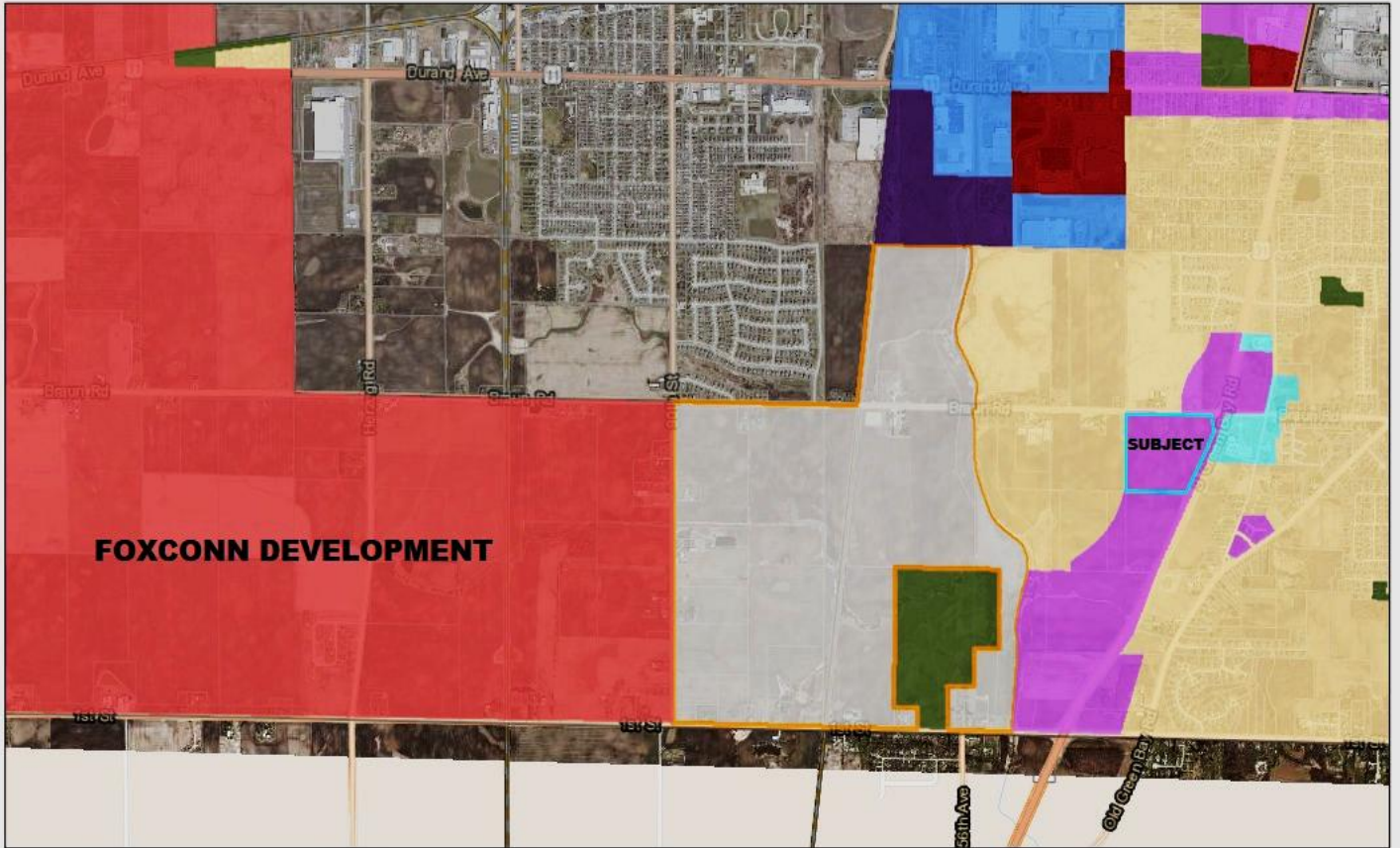
**6309 60th Street, Suite 100, Kenosha, WI 53144**

**ROBERT PITTS**  
**Office #262-654-4900**  
**Cell #262-496-8365**  
**rob@pittsbros.com**

**MICHAEL PITTS, JR.**  
**Office #262-654-4900**  
**Cell #262-496-8777**  
**mpitts@pittsbros.com**

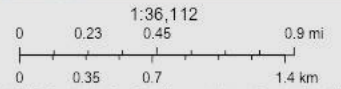
**ANDREW PITTS**  
**Office #262-654-4900**  
**Cell #262-496-8883**  
**andy@pittsbros.com**

# VILLAGE OF MOUNT PLEASANT LONG RANGE PLAN



9/18/2019, 9:17:32 AM

- |                                     |                                                  |                                  |
|-------------------------------------|--------------------------------------------------|----------------------------------|
| Village, Municipal Boundary         | Prime Agricultural Land, Future Residential      | Business                         |
| Racine County, Municipal Boundaries | Residential Areas - Incl. Churches, Multi-Family | Commercial & Services            |
| 2035 Master Plan                    | Institution, School, Government                  | Mixed-Use Residential/Commercial |
| Park, Recreation, Natural Areas     | Industrial                                       | Mixed-Use Business/Commercial    |



Esri, HERE, Garmin, (c) OpenStreetMap contributors, Sources: Esri, HERE, Garmin, FAO, NOAA, USGS, © OpenStreetMap contributors, and the GIS User Community

Staff GIS Viewer  
Village of Mount Pleasant, WI